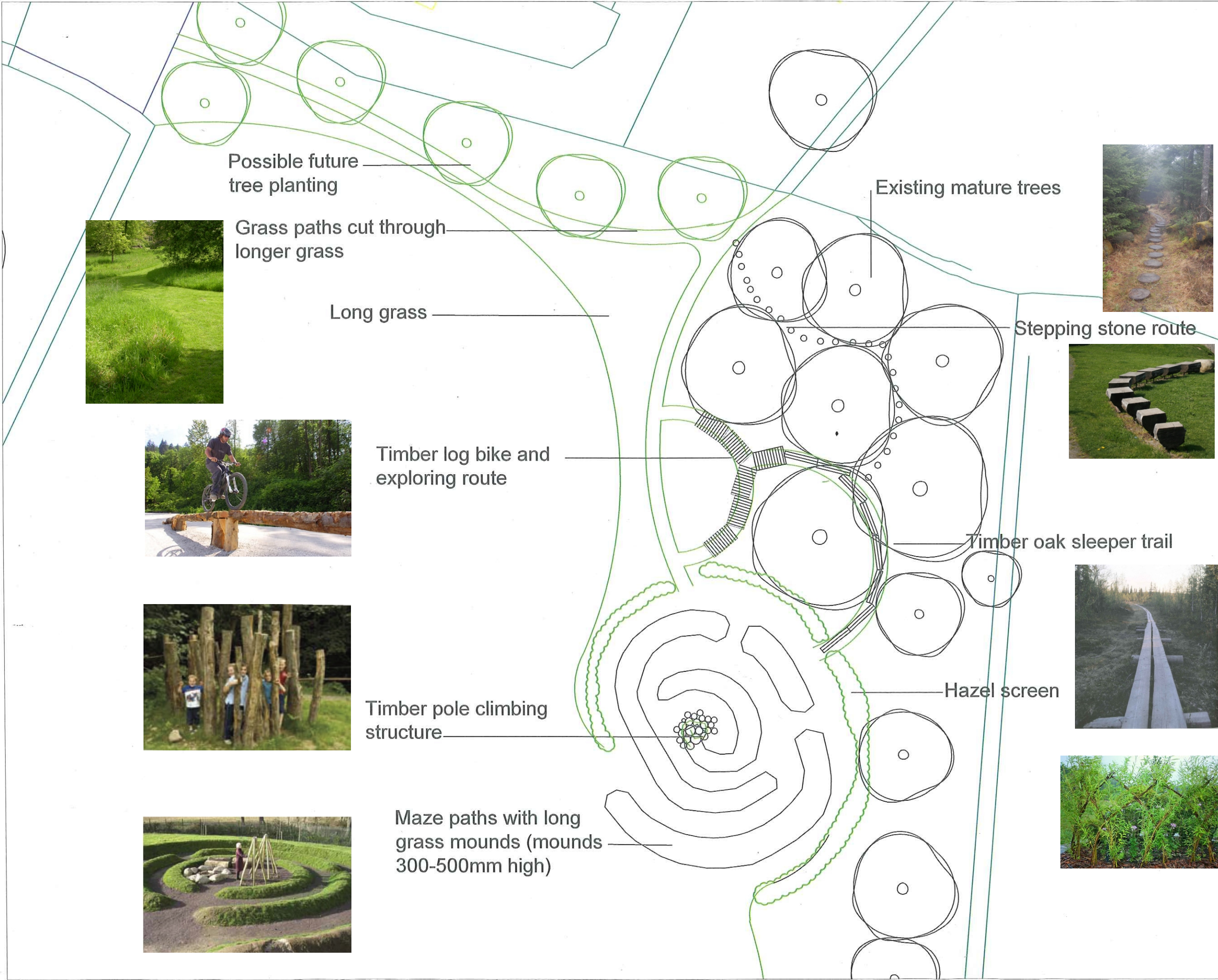


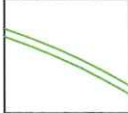

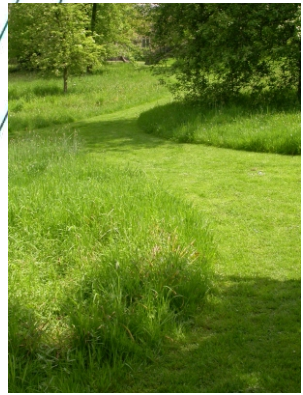


TROOPERS HILL FIELD PATHFINDER



KEY:

-  Existing trees
-  Proposed trees
-  Proposed grass pathways
-  Hazel screen planting



Grass paths cut through longer grass



Timber log bike and exploring route



Timber pole climbing structure



Maze paths with long grass mounds (mounds 300-500mm high)



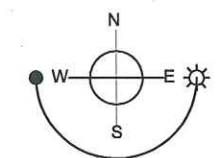
Stepping stone route



Timber oak sleeper trail



Hazel screen



Revision No.	Revision Note	Date	By
BRISTOL CITY COUNCIL Planning, Transport & Sustainable Dev Landscape Design Section			
<small>Brunei House, St George's Road, Bristol BS1 5JY Tel: 0117 9223719 Fax 0117 922 4637</small>			
Project Title TROOPERS HILL PATHFINDER			
Drawing Title SKETCH PLAN OPTION 2			
Date	Drawn by	Checked by	Scale
21/05/09	LE	MD	1:250 @ A1
Drawing Issue	Project No	Drawing No	Rev
Outline	08/063	03	1

NB. Do not scale off this drawing. Check all measurements on site.