



LANDSCAPE

Proposed priorities for action:

- Ensure, where possible, that all key landscape features are protected, enhanced and maintained.
- Record, maintain and, where possible, create important views and vistas within and outside the UDA.
- Promote landscape and streetscape improvements in St Philip's, The Dings and Arno's Vale, including the creation of new open spaces, tree and shrub planting and the cleaning and painting of buildings and bridges.
- Ensure that all new buildings enhance their local landscape; acknowledge their relationship to any key landscape features and realise their potential for the creation of exciting new landscapes, open spaces and other public facilities.
- Encourage developers to incorporate common elements in both the structure and landscaping of new buildings, including materials, architectural features and species of trees and shrubs, to bring a unity and identity to areas of the UDA.
- Promote the establishment of green corridors of native trees and shrubs radiating outwards from the river course; along railway lines and roadways, and through new developments to give an identity and cohesion to the whole UDA.

WATERWAYS

Proposed priorities for action:

- Investigate the possibility of building another weir or barrage near Bath Bridge to restrict tidal fluctuations and create an attractive waterfront for industrial and commercial development, and for use by pleasure boats.
- Encourage high-quality waterfront developments which incorporate open space, footpaths, moorings and other public facilities, protecting any significant historical features and artefacts.
- Improve the attractiveness of the Feeder Canal with the renovation and landscaping of bankside buildings, walkways, railings, open spaces and lock gates.
- Promote further improvements in water quality of both the river and canal, and ensure that all new developments pay careful attention to the siting and design of storm drains and other pollution control measures.
- Create a continuous and attractive footpath along the entire length of the river and canal.
- Actively encourage greater use of the waterways for tourism and recreation.



Potential visitor centre and boat station.

OPEN SPACE

Proposed priorities for action:

- Protect, enhance and maintain all public open spaces.
- Encourage wider but sensitive use of the open spaces to the Avon Valley Conservation Area through zoning, better access points, improved footpath networks, well sited car parks and better management.
- Encourage the development of new recreation grounds, small playspaces and informal open spaces within all new developments, especially in St Anne's, St Philip's and The Dings.
- Create major public spaces in the vicinity of the Floating Harbour and Temple Meads Railway Station.
- Improve and promote footpath and cycleway links between open spaces within and outside the UDA, using the river and canal as the prime corridors.
- Create two substantial green corridors alongside the River Avon and Feeder Canal.
- Use opportunities made by new roads and redundant railway land to create additional linear open space.



PROPOSED LANDSCAPE FRAMEWORK

- Woodland and Open Space
- Landscape Corridors
- ☀ Opportunities for Improved Open Space Provision
- ★ Potential Visitor Centre
- Footpath
- Cycleway/Footpath
- Proposed line of Spine Road
- Alternative Routes
- Barrage



FOOTPATHS AND CYCLEWAYS

Proposed priorities for action:

- Restore and improve the existing network of public footpaths (including the Avon Valley Walkway) through clearance, resurfacing, signposting, better access points and re-routing where necessary.
- Create new footpath links between the existing network and between open spaces both within and outside the UDA.
- Encourage visitors from outside the area to use the footpaths by providing a number of small car parks.
- Develop cycleways linked to footpaths where possible for both commuter and pleasure cyclists.
- Provide well-designed, vandal-resistant signing and way-marking for all public rights of way, with information boards at various sites.
- Encourage the use of the footpath and cycleway system through signs, publications, the use of local voluntary agencies and improved management.



ENERGY, WASTE AND CONSERVATION

Proposed priorities for action:

- Seek to ensure that new buildings meet high specifications in terms of energy efficiency.
- Investigate the potential for development of district heating schemes.
- Encourage the provision of facilities for waste recycling and effective waste disposal.
- Encourage the use of materials in building construction which cause the least damage to the environment and are compatible with it.
- Encourage provision of alternative forms of transport.
- Commission Environmental Impact Assessments on major new developments such as the Bristol Spine Road.
- Ensure that new developments are integrated with the natural environment and address it sensitively.



An energy efficient building.

WILDLIFE

Proposed priorities for action:

- Ensure that designated wildlife sites are cared for and sympathetically managed wherever possible.
- Identify and record other sites of wildlife interest worthy of conservation.
- Encourage developers to consider wildlife conservation through the establishment of waterside habitats, woodlands and meadows, and the inclusion of native plants in more formal settings.
- Ensure that new open spaces and "greenways" are designed to incorporate features that will benefit wildlife.
- Promote the enjoyment of wildlife within public open spaces through publications, nature trails and information boards.



BUILDINGS

Proposed priorities for action:

- Ensure that listed buildings are protected and maintained.
- Identify and record other buildings of particular merit or historic significance.
- Promote good design in all new buildings and encourage developers to have due regard to: the setting of buildings, their relationship to key landscape features, open spaces and archaeological sites; their scale and the extent to which they make provision for public amenities, including open spaces and footpaths.
- Promote improvements in the appearance of the built environment, particularly through the repair, cleaning and repainting of buildings and bridges.
- Ensure that new buildings with car parks and service areas are adequately landscaped with a structured tree and shrub planting programme, using native species wherever possible.

ARCHAEOLOGY

Proposed priorities for action:

- Ensure that all known archaeological sites and relics of industrial heritage are identified and as far as possible protected.
- Identify and list other archaeological and industrial features considered worthy of conservation.
- Encourage developers to have due regard to the significance and value of historic features, by incorporating them in developments wherever possible.
- Develop the visitor and educational potential of the industrial landscape of Crew's Hole, possibly through the establishment of a heritage centre and associated heritage trails.



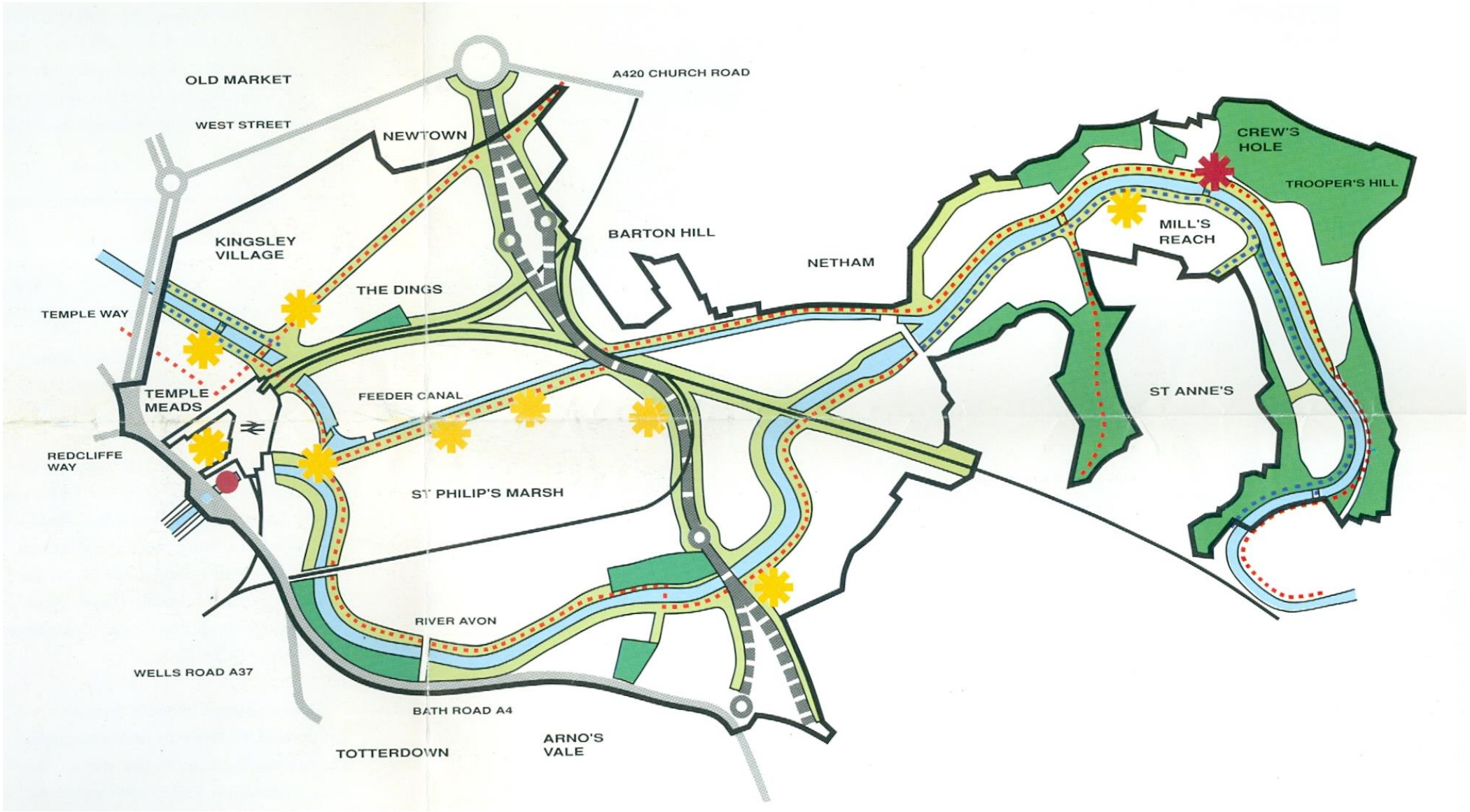
Thrupps' Mill - part of the area's industrial heritage.



PRIORITIES
FOR
LANDSCAPE
&
ENVIRONMENTAL
IMPROVEMENTS

PROPOSED
LANDSCAPE FRAMEWORK

	Woodland and Open Space
	Landscape Corridors
	Opportunities for Improved Open Space Provision
	Potential Visitor Centre
	Footpath
	Cycleway/Footpath
	Proposed line of Spine Road
	Alternative Routes
	Barrage





LANDSCAPE

Proposed priorities for action:

- Ensure, where possible, that all key landscape features are protected, enhanced and maintained;
- Record, maintain and, where possible, create important views and vistas within and outside the UDA;
- Promote landscape and streetscape improvements in St Philip's, The Dings and Arno's Vale, including the creation of new open spaces, tree and shrub planting and the cleaning and painting of buildings and bridges;
- Ensure that all new buildings enhance their local landscape; acknowledge their relationship to any key landscape features and realise their potential for the creation of exciting new landscapes, open spaces and other public facilities;
- Encourage developers to incorporate common elements in both the structure and landscaping of new buildings, including materials, architectural features and species of trees and shrubs, to bring a unity and identity to areas of the UDA;
- Promote the establishment of green corridors of native trees and shrubs radiating outwards from the river course; along railway lines and roadways, and through new developments to give an identity and cohesion to the whole UDA.

WATERWAYS

Proposed priorities for action:

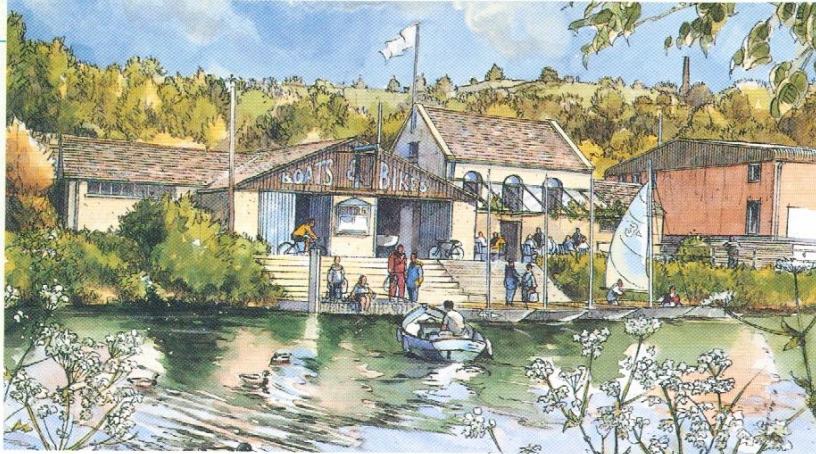
- Investigate the possibility of building another weir or barrage near Bath Bridge to restrict tidal fluctuations and create an attractive waterfront for industrial and commercial development, and for use by pleasure boats;
- Encourage high-quality waterfront developments which incorporate open space, footpaths, moorings and other public facilities; protecting any significant historical features and artefacts;
- Improve the attractiveness of the Feeder Canal with the renovation and landscaping of bankside buildings, walkways, railings, open spaces and lock gates;
- Promote further improvements in water quality of both the river and canal, and ensure that all new developments pay careful attention to the siting and design of storm drains and other pollution control measures;
- Create a continuous and attractive footpath along the entire length of the river and canal;
- Actively encourage greater use of the waterways for tourism and recreation.

PROPOSED

LANDSCAPE FRAMEWORK

Woodland and Open Space

- Actively encourage greater use of the waterways for tourism and recreation.

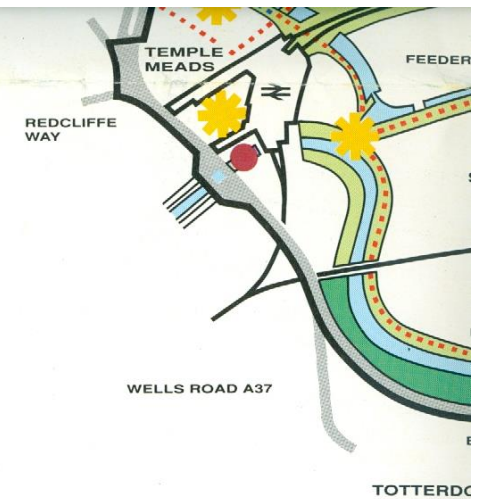
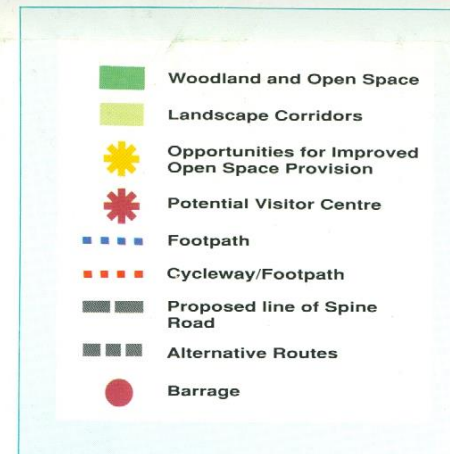
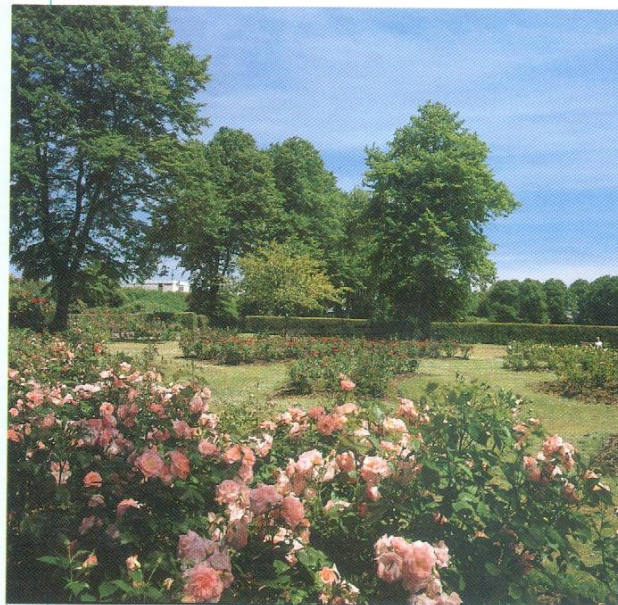


Potential visitor centre and boat station.

OPEN SPACE

Proposed priorities for action:

- Protect, enhance and maintain all public open spaces;
- Encourage wider but sensitive use of the open spaces in the Avon Valley Conservation Area through: zoning; better access points; improved footpath networks, well sited car parks and better management;
- Encourage the development of new recreation grounds, small playspaces and informal open spaces within all new developments, especially in St Anne's, St Philip's and The Dings;
- Create major public spaces in the vicinity of the Floating Harbour and Temple Meads Railway Station.
- Improve and promote footpath and cycleway links between open spaces within and outside the UDA, using the river and canal as the prime corridors;
- Create two substantial green corridors alongside the River Avon and Feeder Canal;
- Use opportunities made by new roads and redundant railway land to create additional linear open space.



FOOTPATHS AND CYCLEWAYS

Proposed priorities for action:

- Restore and improve the existing network of public footpaths (including the Avon Valley Walkway) through clearance, resurfacing, signposting, better access points and re-routing where necessary;
- Create new footpath links between the existing network and between open spaces both within and outside the UDA;
- Encourage visitors from outside the area to use the footpaths by providing a number of small car parks;
- Develop cycleways linked to footpaths where possible for both commuter and pleasure cyclists;
- Provide well-designed, vandal-resistant signing and way-marking for all public rights of way, with information boards at various sites;
- Encourage the use of the footpath and cycleway system through signs, publications, the use of local voluntary agencies and improved management.



ENERGY, WASTE AND CONSERVATION

Proposed priorities for action:

- Seek to ensure that new buildings meet high specifications in terms of energy efficiency;
- Investigate the potential for development of district heating schemes;
- Encourage the provision of facilities for waste recycling and effective waste disposal;
- Encourage the use of materials in building construction which cause the least damage to the environment and are compatible with it;
- Encourage provision of alternative forms of transport;
- Commission Environmental Impact Assessments on major new developments such as the Bristol Spine Road;
- Ensure that new developments are integrated with the natural environment and address it sensitively.



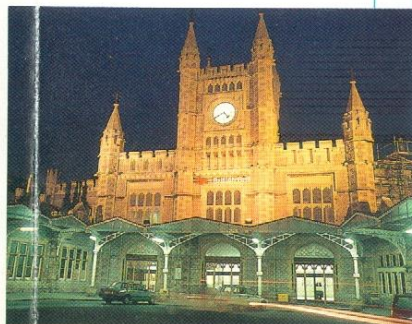
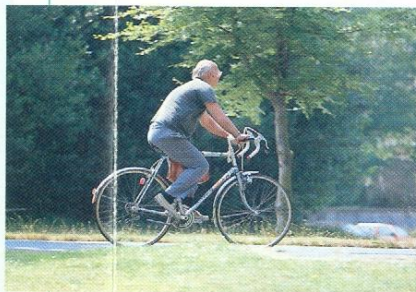
An energy efficient building.



FOOTPATHS AND CYCLEWAYS

Proposed priorities for action:

- Restore and improve the existing network of public footpaths (including the Avon Valley Walkway) through clearance, resurfacing, signposting, better access points and re-routing where necessary;
- Create new footpath links between the existing network and between open spaces both within and outside the UDA;
- Encourage visitors from outside the area to use the footpaths by providing a number of small car parks;
- Develop cycleways linked to footpaths where possible for both commuter and pleasure cyclists;
- Provide well-designed, vandal-resistant signing and way-marking for all public rights of way, with information boards at various sites;
- Encourage the use of the footpath and cycleway system through signs, publications, the use of local voluntary agencies and improved management.



BUILDINGS

Proposed priorities for action:

- Ensure that listed buildings are protected and maintained;
- Identify and record other buildings of particular merit or historic significance;
- Promote good design in all new buildings and encourage developers to have due regard to: the setting of buildings, their relationship to key landscape features, open spaces and archaeological sites; their scale and the extent to which they make provision for public amenities, including open spaces and footpaths;
- Promote improvements in the appearance of the built environment, particularly through the repair, cleaning and repainting of buildings and bridges;
- Ensure that new buildings with car parks and service areas are adequately landscaped with a structured tree and shrub planting programme, using native species wherever possible.

WILDLIFE

Proposed priorities for action:

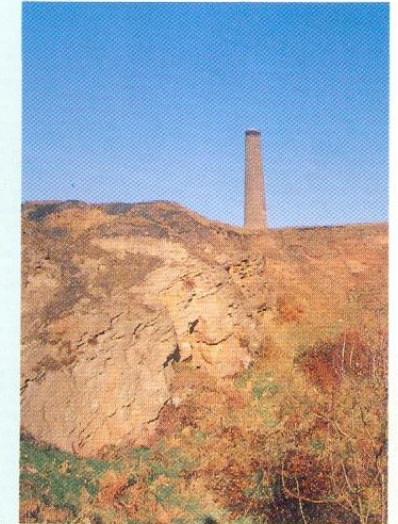
- Ensure that designated wildlife sites are cared for and sympathetically managed wherever possible;
- Identify and record other sites of wildlife interest worthy of conservation;
- Encourage developers to consider wildlife conservation through the establishment of waterside habitats, woodlands and meadows, and the inclusion of native plants in more formal settings;
- Ensure that new open spaces and “greenways” are designed to incorporate features that will benefit wildlife;
- Promote the enjoyment of wildlife within public open spaces through publications, nature trails and information boards.



ARCHAEOLOGY

Proposed priorities for action:

- Ensure that all known archaeological sites and relics of industrial heritage are identified and as far as possible protected;
- Identify and list other archaeological and industrial features considered worthy of conservation;
- Encourage developers to have due regard to the significance and value of historic features, by incorporating them in developments wherever possible;
- Develop the visitor and educational potential of the industrial landscape of Crew's Hole, possibly through the establishment of a heritage centre and associated heritage trails.



Trooper's Hill - part of the areas' industrial heritage.